



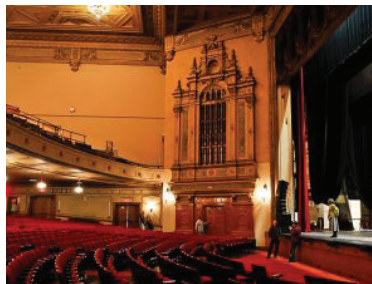
PROJECT PROFILE



THE TUFDEK SOLUTION

Built in 1927, the Nourse is a landmark venue located in the heart of San Francisco's Performing Arts Center. The hall has been closed to the public for over thirty years. In 2012, City Arts & Lectures began a restoration project and is delighted to be bringing the theater back to public use. The hall features excellent acoustics, a well-designed layout offering unobstructed views throughout the orchestra and balcony, and original architectural details. City Arts & Lectures has refurbished the 1600-seat hall, installing state of the art lighting and high quality sound equipment including Meyer speakers, new curtains, plush upholstered seats, newly decorated green room and dressing rooms. The Nourse is an ideal venue for a wide range of performances and a uniquely beautiful setting.

An ongoing issue for the SFUSD, Tufdek™ was Specified as the replacement roofing membrane to not only end the leakage problems over the recent restoration of the breathtaking Nourse Auditorium, but also perform the dual function of providing a walking surface, as was intended with the original building design.



Tufdek's exclusive Polycarbonate top coat and laminated five layer assembly make it the world's strongest, longest-lasting, and best performing waterproof deck system available on the market today.

WATERPROOFING SOLUTION

PROJECT

Nourse Auditorium
San Francisco, CA

OWNER

San Francisco Unified School District

PRODUCT

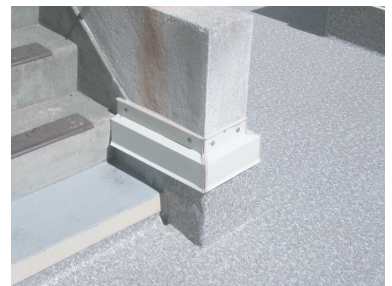
Supreme Series

INSTALLATION DATE

September 2013

BUSINESS PARTNERS

Western Roofing Service
Skyline Engineering, Inc.



TUFF INDUSTRIES^{INC.}